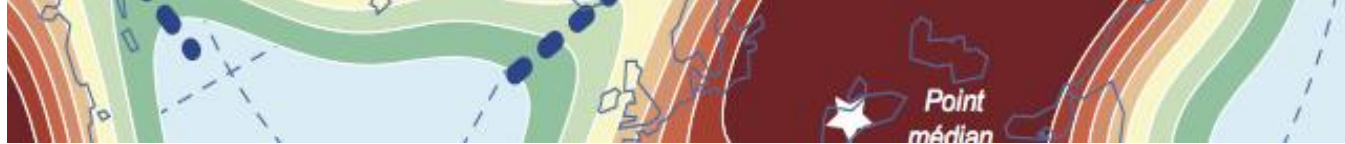


## CARTES ET ARGUMENTS (6)

# Paris, "Ville-Lumière" ou capitale de la pollution lumineuse ?





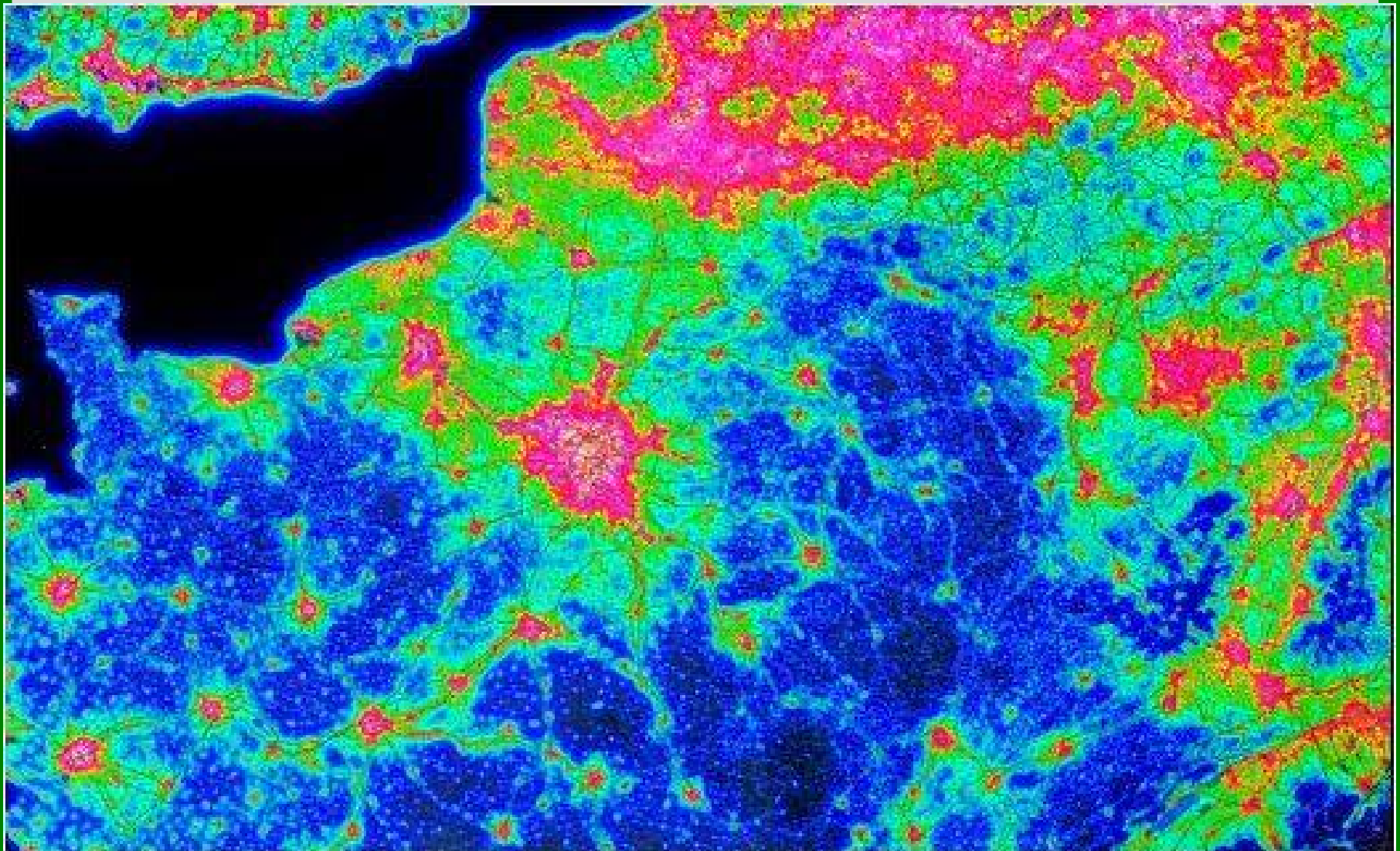
## **VU DU SOL** **Une aurore boréale permanente**

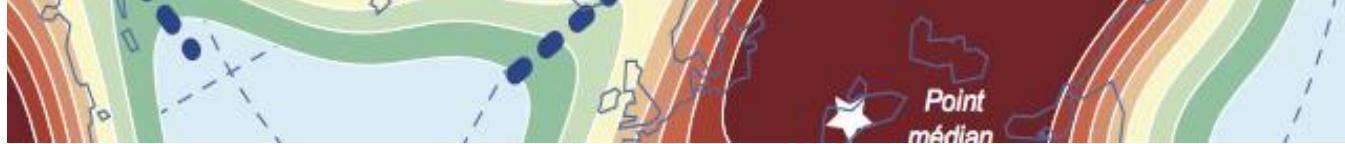




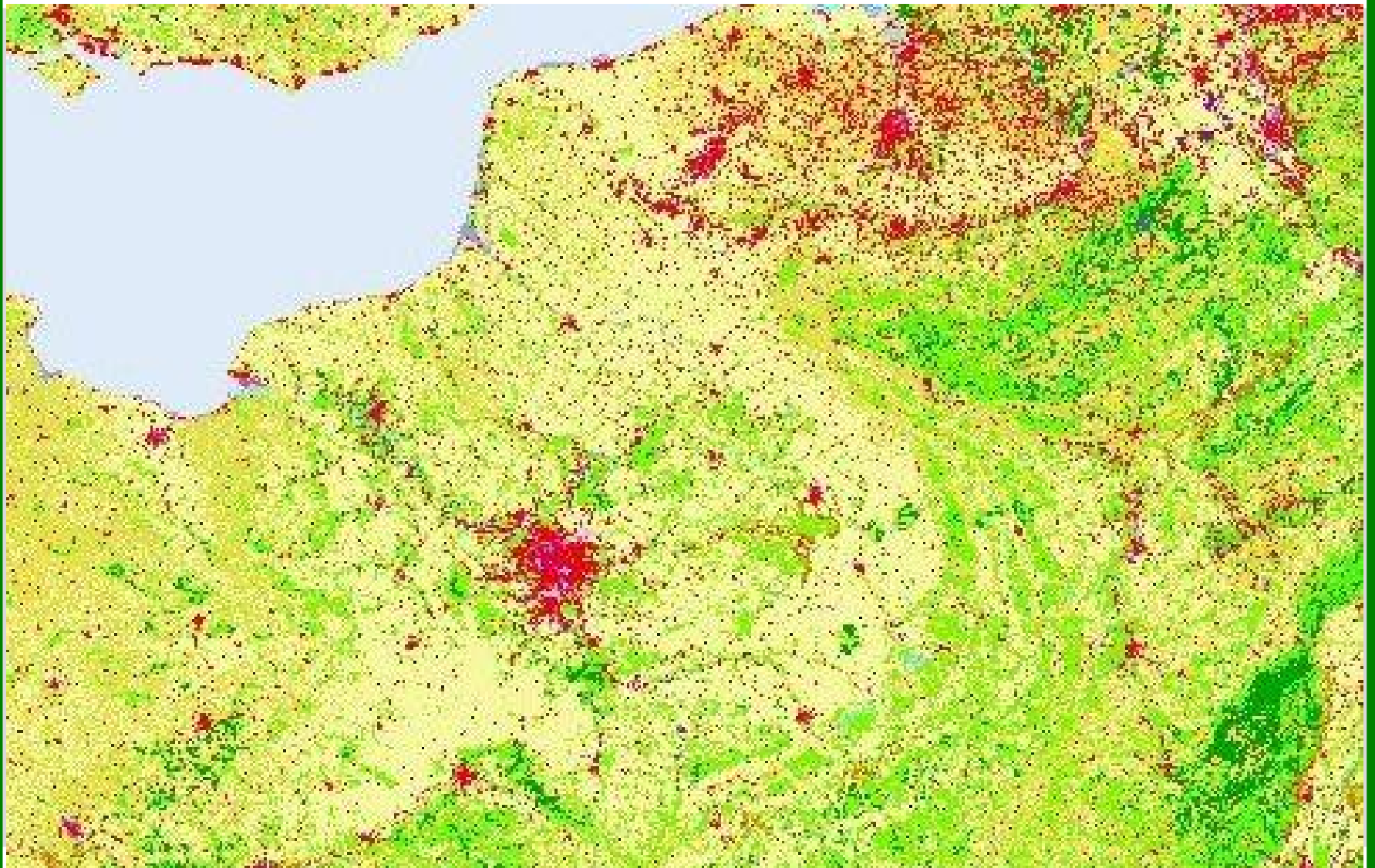
# VU DU CIEL

## Une sclérose en plaques





## LES ESPACES URBAINS EN 2000





## LE GRIGNOTAGE DES ESPACES NATURELS (1990-2000)

