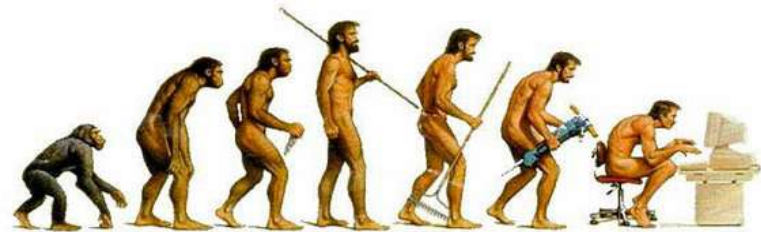
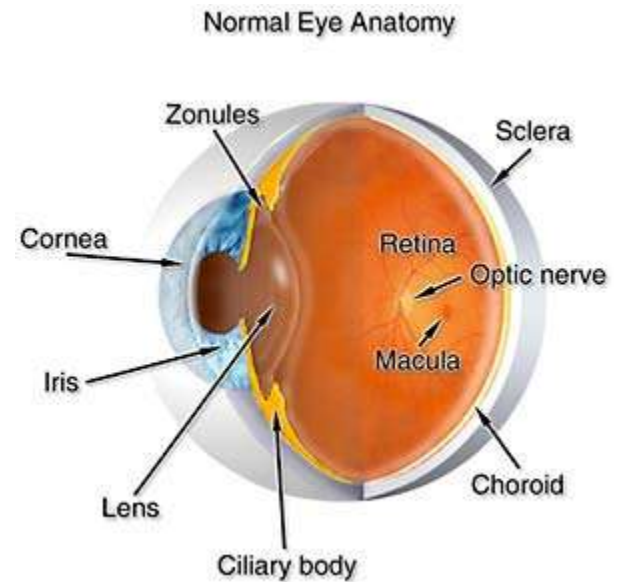
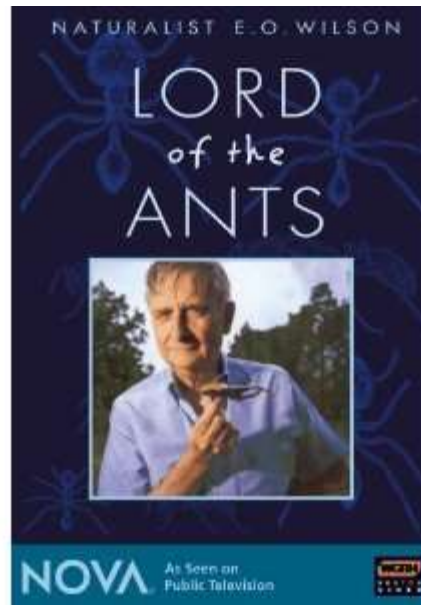
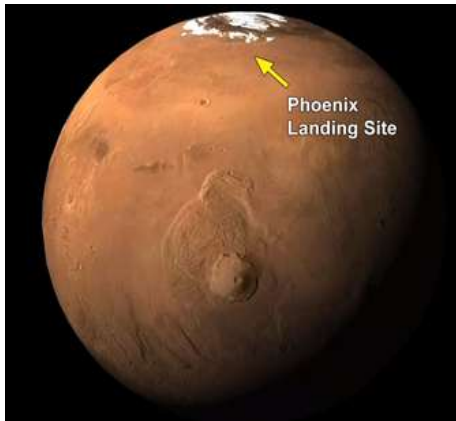




Our highschool



# Biology in CLIL



# The black poplar project (Génome à l'école)



Did the Black Poplar really  
disappear in our region ?

How about its genetic diversity?

How different are French trees  
from English ones?

Why do we want to replant it ?

Is it useful ?

# Black poplar description and characteristics

Clones : If one is sick, all are sick



Specific structure of leaves and buds

A specific trunk shape...



*Populus nigra italica*

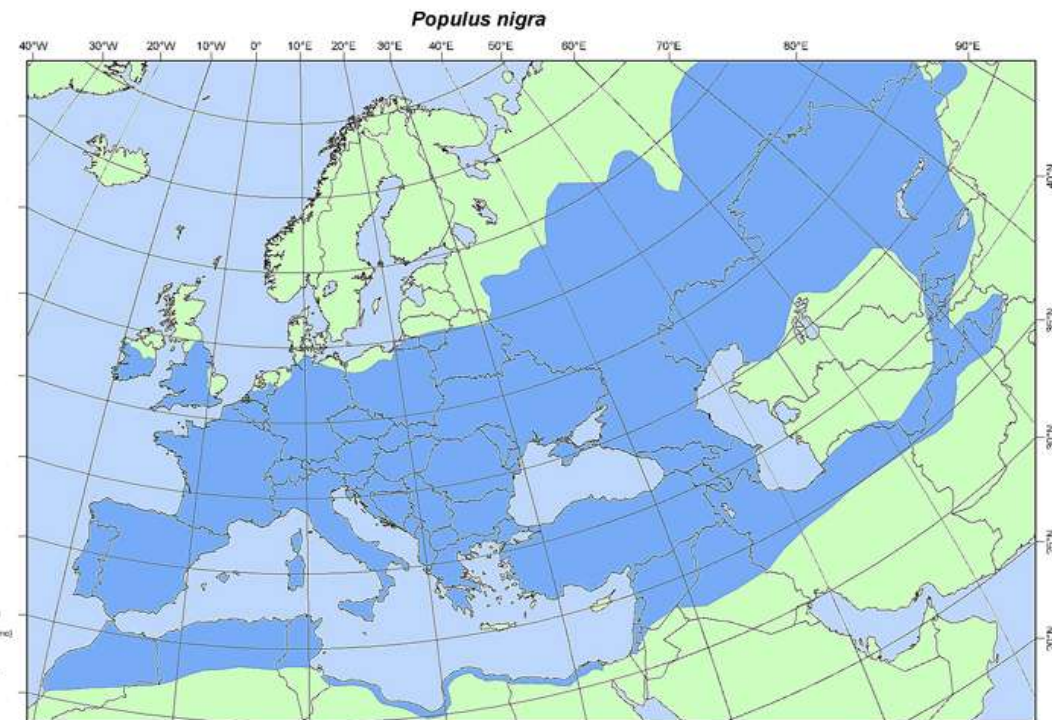


Cultivated hybrid poplars



*Populus nigra*

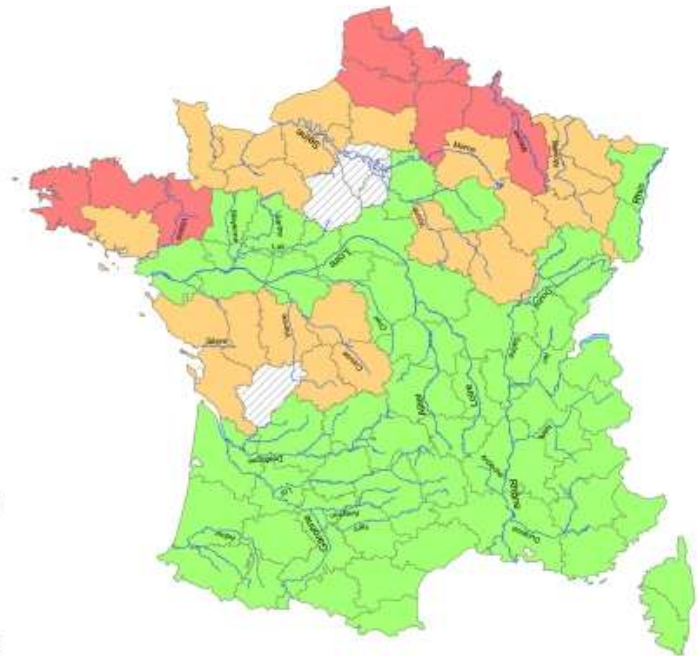
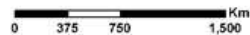
# Black poplar in France and in Europe...



This distribution map, showing the natural distribution area of *Populus nigra* was compiled by members of the EUFORGEN Networks

Citation: Distribution map of Black poplar (*Populus nigra*) EUFORGEN 2009, [www.euforgen.org](http://www.euforgen.org).

First published online in 2004



re de répartition du Peuplier noir  
(*Populus nigra*) Janvier 2011

- Rivières Principales
- Présent en ripisylve
- Individus isolés
- Disparu ou absent

# Why is INRA interested in them?

- Preserving trees in Europe



EUFORGEN is a collaborative programme among European countries to promote conservation and sustainable use of forest genetic resources. It serves as a platform for pan-European collaboration in this area, bringing together scientists, managers, policy-makers and other stakeholders.

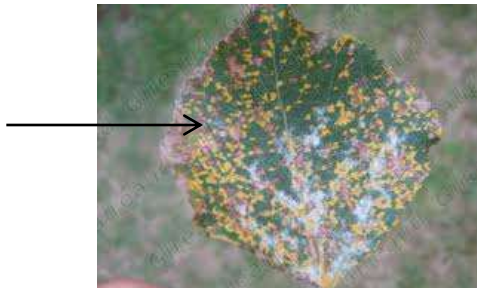
- Finding interesting new genes for cultivated poplars.

- pests resistance

- best wood quality

- for paper production

Leaf  
mould



Lignin